



## Traffic Safety Facts Puerto Rico 2004-2008



This Report Contains Data From the Following Sources:

- Fatality Data - NCSA Fatality Analysis Reporting System (FARS): 2004-2007 Final File and 2008 Annual Report File (ARF)
- Observed Safety Belt Data - NCSA National Occupant Protection Use Survey (NOPUS) and the Puerto Rico State Survey
- Vehicle Miles of Travel Data and Motorcycle Registrations - Federal Highway Administration (FHWA)
- Population Data - U.S. Bureau of the Census



## Table of Contents

3. Traffic Safety Performance Measures
4. Fatality Rates: Puerto Rico , U.S. and Best State
5. Alcohol-Related Fatalities: Puerto Rico , U.S. and Best State (Old Definition)
6. Alcohol-Impaired Driving Fatalities: Puerto Rico , U.S. and Best State (New Definition)
7. Fatalities Per 100 Million VMT: Puerto Rico , U.S.
7. Alcohol-Impaired Driving Fatalities Per 100 Million VMT: Puerto Rico , U.S.
8. Blood Alcohol Concentration (BAC) Reporting Rates For Drivers/Motorcycle Rider (Operators) Involved in Fatal Crashes: Puerto Rico , U.S. and Best State
9. Front Seat Passenger Vehicle Occupants, Aged 5 and Over, by Restraint Use: Fatalities and Observed Puerto Rico , U.S. and Best State
10. Front Seat Passenger Vehicle Occupant Fatalities, Aged 5 and Over, by Percent Restraint Use: Puerto Rico , U.S.
10. Front Seat Passenger Vehicle Occupants Observed, Aged 5 and Over, by Percent Restraint Use: Puerto Rico , U.S.
11. Passenger Vehicle Occupant Fatalities Aged 5 and Above by Restraint Use and Lives Saved Estimates
11. Passenger Vehicle Occupant Fatalities Aged Under 5 by Restraint Use and Lives Saved Estimates
12. Motorcyclist Fatalities by Helmet Use and Lives Saved Estimates
13. Fatalities by Person Type
14. Fatalities by Crash Type
15. Motorcyclist Fatalities by Age
15. Motorcyclist Fatalities Per 100,000 Registered Motorcycles
16. Fatalities by Person Type and Race/Hispanic Origin



## Traffic Safety Performance (Core Outcome) Measures\* For Puerto Rico

Core Outcome Measures		Year				
		2004	2005	2006	2007	2008
<b>Traffic Fatalities</b>	<b>Total</b>	495	457	509	452	399
	<b>Rural</b>	230	216	251	218	208
	<b>Urban</b>	265	241	258	234	191
	<b>Unknown</b>	0	0	0	0	0
<b>Fatalities Per 100 Million Vehicle Miles Driven**</b>	<b>Total</b>	2.54	2.35	2.59	2.35	
	<b>Rural</b>	17.86	16.69	18.84	16.83	
	<b>Urban</b>	1.45	1.33	1.41	1.31	
<b>Passenger Vehicle Occupant Fatalities (All Seat Positions)</b>	<b>Total</b>	249	215	227	204	172
	<b>Restrained</b>	100	88	102	85	83
	<b>Unrestrained</b>	149	127	125	119	89
	<b>Unknown</b>	0	0	0	0	0
<b>Alcohol-Impaired Driving Fatalities (BAC=.08+)**</b>		174	160	143	142	132
<b>Speeding-Related Fatalities</b>		237	217	220	228	162
<b>Motorcyclist Fatalities</b>	<b>Total</b>	63	90	115	94	78
	<b>Helmeted</b>	21	37	50	29	28
	<b>Unhelmeted</b>	42	53	65	65	50
	<b>Unknown</b>	0	0	0	0	0
<b>Drivers Involved in Fatal Crashes</b>	<b>Total</b>	625	601	658	613	535
	<b>Aged Under 15</b>	1	2	0	0	2
	<b>Aged 15-20</b>	96	76	87	92	53
	<b>Aged Under 21</b>	97	78	87	92	55
	<b>Aged 21 and Over</b>	467	487	528	483	451
	<b>Unknown Age</b>	61	36	43	38	29
<b>Pedestrian Fatalities</b>		162	134	140	144	127

\*These Performance Measures Were Developed By The National Highway Traffic Safety Administration (NHTSA) and the Governors Highway Safety Association (GHSA) (See Publication: DOT HS 811 025)

\*\*2008 State Vehicle Miles Traveled (VMT) Data is Not Yet Available

\*\*\*Based on the BAC of All Involved Drivers and Motorcycle Riders (Operators) Only

[Back To The Table of Contents](#)



### Fatality Rates: Puerto Rico , U.S. and Best State

Year		Fatalities	Total Vehicle Miles Traveled (Millions)	Fatalities Per 100 Million Vehicle Miles Traveled	Total Population	Fatalities Per 100,000 Population
2004	Puerto Rico	495	19,504	2.54	3,893,931	12.71
	US	42,836	2,964,788	1.44	292,892,127	14.63
	Best State*			0.87		7.39
2005	Puerto Rico	457	19,411	2.35	3,910,707	11.69
	US	43,510	2,989,430	1.46	295,560,549	14.72
	Best State*			0.80		6.85
2006	Puerto Rico	509	19,637	2.59	3,926,698	12.96
	US	42,708	3,014,371	1.42	298,362,973	14.31
	Best State*			0.78		6.32
2007	Puerto Rico	452	19,205	2.35	3,941,160	11.47
	US	41,259	3,029,822	1.36	301,290,332	13.69
	Best State*			0.79		6.55
2008	Puerto Rico	399			3,954,037	10.09
	US	37,261	2,925,503	1.27	304,059,724	12.25
	Best State*					5.59

\*State (or States) With Lowest Rates: Lowest VMT and Population Rates Could Be in Different States

2008 National VMT is a Preliminary Estimate and Subject to Change

2008 State Vehicle Miles Traveled (VMT) Data is Not Yet Available

[Back To The Table of Contents](#)



Fatalities By The Highest Blood Alcohol Concentration (BAC) in the Crash\*\*:  
 Puerto Rico , U.S. and Best State  
 (Old Definition)

Year		Total Fatalities in all Crashes	Highest BAC level in the Crash				
			BAC = .01+		BAC = .08+		Per 100 Million VMT
			Number	Percent	Number	Percent	
2004	Puerto Rico	495	250	51	224	45	1.15
	US	42,836	16,919	39	14,593	34	0.49
	Best State*			25		21	0.27
2005	Puerto Rico	457	234	51	197	43	1.01
	US	43,510	17,590	40	15,102	35	0.51
	Best State*			14		12	0.14
2006	Puerto Rico	509	219	43	182	36	0.93
	US	42,708	17,738	42	15,144	35	0.50
	Best State*			24		20	0.22
2007	Puerto Rico	452	209	46	170	38	0.89
	US	41,259	17,158	42	14,603	35	0.48
	Best State*			24		21	0.23
2008	Puerto Rico	399	199	50	165	41	
	US	37,261	15,438	41	13,294	36	0.45
	Best State*			21		16	

\*State (or States) With Lowest Percents: Lowest Percents Could Be in Different States  
 \*\*Based on the BAC of All Involved Drivers, Motorcycle Riders (Operators), Pedalcyclists and Pedestrians  
 2008 National VMT is a Preliminary Estimate and Subject to Change  
 2008 State Vehicle Miles Traveled (VMT) Data is Not Yet Available

[Back To The Table of Contents](#)



Alcohol-Impaired Driving Fatalities\*\*:  
Puerto Rico , U.S. and Best State  
(New Definition)

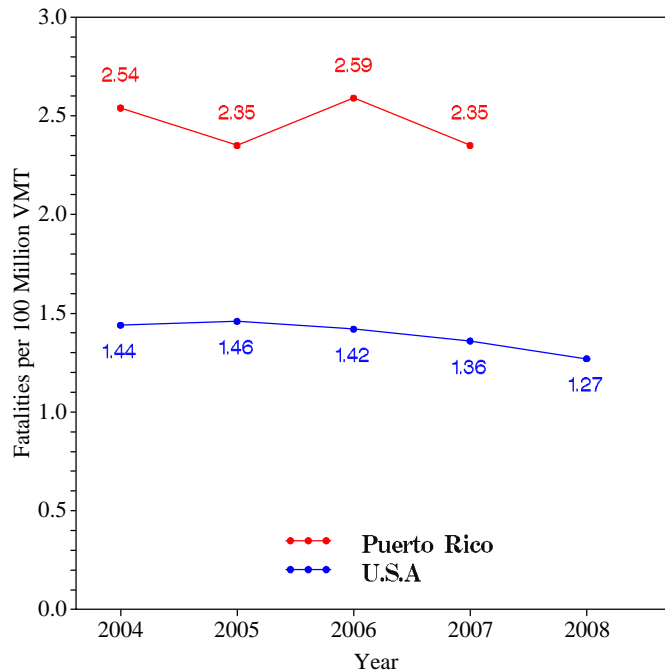
Year		Total Fatalities in all Crashes	Alcohol-Impaired Driving Fatalities (BAC = .08+)		
			Number	Percent	Per 100 Million VMT
2004	Puerto Rico	495	174	35	0.89
	US	42,836	13,099	31	0.44
	Best State*			20	0.25
2005	Puerto Rico	457	160	35	0.82
	US	43,510	13,582	31	0.45
	Best State*			12	0.13
2006	Puerto Rico	509	143	28	0.73
	US	42,708	13,491	32	0.45
	Best State*			18	0.20
2007	Puerto Rico	452	142	31	0.74
	US	41,259	13,041	32	0.43
	Best State*			19	0.21
2008	Puerto Rico	399	132	33	
	US	37,261	11,773	32	0.40
	Best State*			16	

\*State (or States) With Lowest Percents: Lowest Percents Could Be in Different States  
 \*\*Based on the BAC of All Involved Drivers and Motorcycle Riders (Operators) Only  
 2008 National VMT is a Preliminary Estimate and Subject to Change  
 2008 State Vehicle Miles Traveled (VMT) Data is Not Yet Available

[Back To The Table of Contents](#)

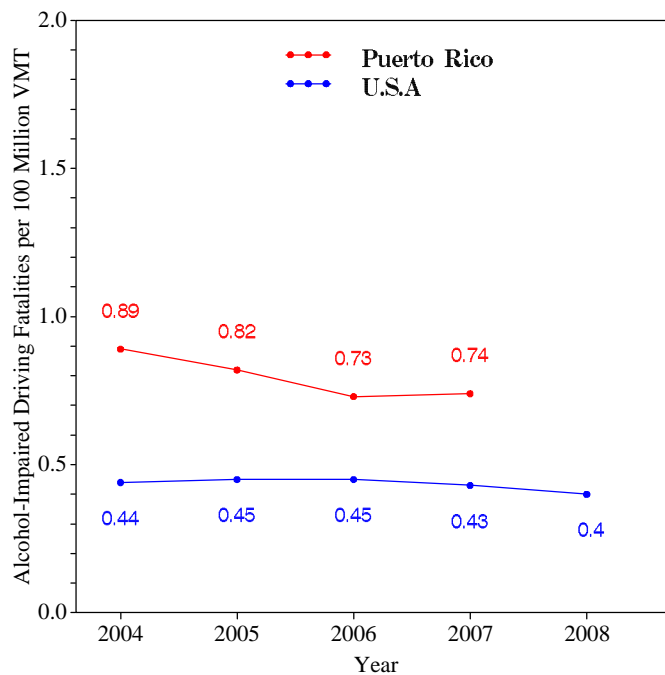


### Fatalities per 100 Million VMT



[Back To The Table of Contents](#)

### Alcohol-Impaired Driving Fatalities per 100 Million VMT



2008 National VMT is a Preliminary Estimate and Subject to Change  
2008 State Vehicle Miles Traveled (VMT) Data is Not Yet Available

[Back To The Table of Contents](#)



**Blood Alcohol Concentration (BAC) Reporting Rates  
For Drivers/Motorcycle Riders (Operators)  
Involved in Fatal Crashes:  
Puerto Rico , U.S. and Best State**

Year		Surviving Drivers/Motorcycle Riders			Killed Drivers/Motorcycle Riders			Total Drivers/Motorcycle Riders		
		Total	With Blood Alcohol Concentration (BAC) Results Reported to FARS		Total	With Blood Alcohol Concentration (BAC) Results Reported to FARS		Total	With Blood Alcohol Concentration (BAC) Results Reported to FARS	
			Number	Percent		Number	Percent		Number	Percent
2004	Puerto Rico	404	217	54	221	180	81	625	397	64
	US	31,524	8,215	26	26,871	18,275	68	58,395	26,490	45
	Best State*			80			97			82
2005	Puerto Rico	365	214	59	236	195	83	601	409	68
	US	31,729	7,415	23	27,491	18,773	68	59,220	26,188	44
	Best State*			77			98			84
2006	Puerto Rico	388	264	68	270	227	84	658	491	75
	US	30,498	7,482	25	27,348	18,911	69	57,846	26,393	46
	Best State*			81			99			85
2007	Puerto Rico	376	246	65	237	218	92	613	464	76
	US	29,449	7,631	26	26,570	19,434	73	56,019	27,065	48
	Best State*			82			100			84
2008	Puerto Rico	328	218	66	207	166	80	535	384	72
	US	26,011	6,677	26	24,175	17,045	71	50,186	23,722	47
	Best State*			80			95			84

\*State (or States) With Highest Percents: Highest Percents Could Be in Different States

[Back To The Table of Contents](#)



Daytime Front Seat (Outboard Only) Passenger Vehicle Occupants, Aged 5 and Over, by Restraint Use:  
Fatalities and Observed  
Puerto Rico , U.S. and Best State

Year		Fatalities - Restrained**	Observed - Restrained***
		Percent	Percent
2004	US	56	80
	Best State*	82	95
2005	US	55	82
	Best State*	88	95
2006	US	55	81
	Best State*	77	96
2007	US	57	82
	Best State*	82	98
2008	US	56	83
	Best State*	78	97

\*State With Highest Percent. Fatal Crash and Observed Percents Can Be Different States

\*\*Percent Based Only Where Restraint Use Was Known

\*\*\*USA Data: National Occupant Protection Use Survey. Puerto Rico Data: State Survey

Note: The Purpose of this Table is to Compare (as closely as possible) the Use of Restraint Systems by Fatally Injured Occupants with Occupants in all Driving Situations

[Back To The Table of Contents](#)



## Daytime Front Seat (Outboard Only) Passenger Vehicle Occupant Fatalities, Aged 5 and Over, by Percent Restraint Use\*

\*Percent Based Only Where Restraint Use Was Known

[Back To The Table of Contents](#)

## Daytime Front Seat (Outboard Only) Passenger Vehicle Occupants Observed, Aged 5 and Over, by Percent Restraint Use\*

\*USA Data: National Occupant Protection Use Survey. Puerto Rico Data: State Survey

[Back To The Table of Contents](#)



### Passenger Vehicle Occupant Fatalities Age 5 and Above by Restraint Use and Lives Saved Estimates

Year	Fatalities Age 5 and Above					Lives Saved Estimates**	
	Total	Restrained	Unrestrained	Unknown Restraint Use	Percent Known Restrained*	Lives Saved at Current Belt Use	Additional Lives Savable at 100% Belt Usage
2004	247	98	149	0	40	98	23
2005	212	88	124	0	42	85	14
2006	222	100	122	0	45	107	21
2007	199	84	115	0	42	84	15
2008	166	79	87	0	48	88	12

\*Percent Based Only Where Restraint Use Was Known

\*\*Lives Saved Estimates (Sum of columns may not equal other published numbers due to rounding)

[Back To The Table of Contents](#)

### Passenger Vehicle Occupant Fatalities Age 4 and Under by Restraint Use and Lives Saved Estimates

Year	Fatalities Age 4 and Under					Lives Saved Estimates**
	Total	Restrained	Unrestrained	Unknown Restraint Use	Percent Known Restrained*	Lives Saved at Current Seat Belt and Child Safety Seat Usage
2004	2	2	0	0	100	3
2005	0	0	0	0		0
2006	3	1	2	0	33	1
2007	0	0	0	0		0
2008	5	3	2	0	60	7

\*Percent Based Only Where Restraint Use Was Known

\*\*Lives Saved Estimates

[Back To The Table of Contents](#)



### Motorcyclist Fatalities by Helmet Use and Lives Saved Estimates

Year	Fatalities					Lives Saved Estimates**	
	Total	Helmeted	Unhelmeted	Unknown Helmet Use	Percent Known Helmeted*	Lives Saved at Current Helmet Use	Additional Lives Savable at 100% Helmet Usage
2004	63	21	42	0	33	12	16
2005	90	37	53	0	41	22	20
2006	115	50	65	0	43	29	24
2007	94	29	65	0	31	17	24
2008	78	28	50	0	36	17	19

\*Percent Based Only Where Helmet Use Was Known

\*\*Lives Saved Estimates (Sum of columns may not equal other published numbers due to rounding)

[Back To The Table of Contents](#)



## Fatalities by Person Type

Person Type		2004		2005		2006		2007		2008	
		#	%*	#	%*	#	%*	#	%*	#	%*
<b>Occupants</b>	<b>Passenger Car</b>	198	40	161	35	167	33	164	36	129	32
	<b>Light Truck - Pickup</b>	22	4	21	5	17	3	8	2	13	3
	<b>Light Truck - Utility</b>	22	4	29	6	35	7	27	6	26	7
	<b>Light Truck - Van</b>	7	1	4	1	8	2	5	1	4	1
	<b>Large Truck</b>	2	0	5	1	4	1	2	0	5	1
	<b>Bus</b>	0	0	0	0	0	0	0	0	2	1
	<b>Other/Unknown Occupants</b>	3	1	0	0	0	0	0	0	2	1
	<b><i>Total Occupants</i></b>	<b>254</b>	<b>51</b>	<b>220</b>	<b>48</b>	<b>231</b>	<b>45</b>	<b>206</b>	<b>46</b>	<b>181</b>	<b>45</b>
<b>Motorcyclists</b>	<b><i>Total Motorcyclists</i></b>	<b>63</b>	<b>13</b>	<b>90</b>	<b>20</b>	<b>115</b>	<b>23</b>	<b>94</b>	<b>21</b>	<b>78</b>	<b>20</b>
<b>Nonoccupants</b>	<b>Pedestrian</b>	162	33	134	29	140	28	144	32	127	32
	<b>Bicyclist and Other Cyclist</b>	16	3	11	2	20	4	6	1	12	3
	<b>Other/Unknown Nonoccupants</b>	0	0	2	0	3	1	2	0	1	0
	<b><i>Total Nonoccupants</i></b>	<b>178</b>	<b>36</b>	<b>147</b>	<b>32</b>	<b>163</b>	<b>32</b>	<b>152</b>	<b>34</b>	<b>140</b>	<b>35</b>
<b>Total</b>	<b><i>Total</i></b>	<b>495</b>	<b>100</b>	<b>457</b>	<b>100</b>	<b>509</b>	<b>100</b>	<b>452</b>	<b>100</b>	<b>399</b>	<b>100</b>

\*Sum of Percents May Not = 100 Due to Individual Cell Rounding

[Back To The Table of Contents](#)



### Fatalities by Crash Type

Crash Type	2004	2005	2006	2007	2008
<b>Total Fatalities (All Crashes)*</b>	495	457	509	452	399
<b>- (1) Single Vehicle</b>	329	305	337	279	259
<b>- (2) Involving a Large Truck</b>	26	40	30	18	29
<b>- (3) Involving Speeding</b>	237	217	220	228	162
<b>- (4) Involving a Rollover</b>	36	40	45	35	28
<b>- (5) Involving a Roadway Departure</b>	127	145	138	116	98
<b>- (6) Involving an Intersection (or Intersection Related)</b>	9	9	10	6	2

(1) Crash Involved Only One Coded Vehicle

(2) Crash Involved at Least One Large Truck

(3) Crash Involved at Least One Vehicle Speeding

(4) Crash Involved at Least One Vehicle That Rolled Over

(5) Crash Involved at Least One Vehicle That Departed the Roadway (FHWA Definition)

(6) Crash Occured Within an Intersection or Within the Approach to an Intersection

\*A Fatality Can Be in More Than One Category. Therefore Sum of the Individual Cells Will Not Equal the Total Due to Double Counting

[Back To The Table of Contents](#)



### Motorcyclist Fatalities by Age

Year	Age							Total
	<20	20-29	30-39	40-49	50-59	>59	Unknown	
2004	5	30	16	10	1	0	1	63
2005	8	45	16	11	8	2	0	90
2006	17	45	28	18	4	3	0	115
2007	14	38	23	11	3	2	3	94
2008	10	29	19	14	4	2	0	78

[Back To The Table of Contents](#)

### Motorcyclist Fatalities Per 100,000 Registered Motorcycles

Year	Motorcyclist Fatalities	Total Motorcycle Registrations*	Motorcyclist Fatalities Per 100,000 Motorcycle Registrations
2004	63	31,770	198.3
2005	90	31,770	283.3
2006	115	91,082	126.3
2007	94	115,865	81.13
2008	78		

\*Data Source: FHWA

\*2008 Motorcycle Registrations are Not Yet Available

[Back To The Table of Contents](#)



### Fatalities by Person Type and Race/Hispanic Origin

Person Type by Race/Hispanic Origin		2004	2005	2006	2007
Occupants (All Vehicle Types)	Hispanic	317	301	346	299
	American Indian, Non-Hispanic/Unknown	0	0	0	1
	Unknown Race and Unknown Hispanic	0	9	0	0
	<b>Total</b>	317	310	346	300
Non-Occupants (Pedestrians, Pedalcyclists and Other/Unknown NonOccupants)					
	Hispanic	178	140	163	152
	American Indian, Non-Hispanic/Unknown	0	0	0	0
	Unknown Race and Unknown Hispanic	0	7	0	0
	<b>Total</b>	178	147	163	152
<b>Total</b>		495	457	509	452

2008 Race/Hispanic Origin Data is Not Yet Complete

[Back To The Table of Contents](#)