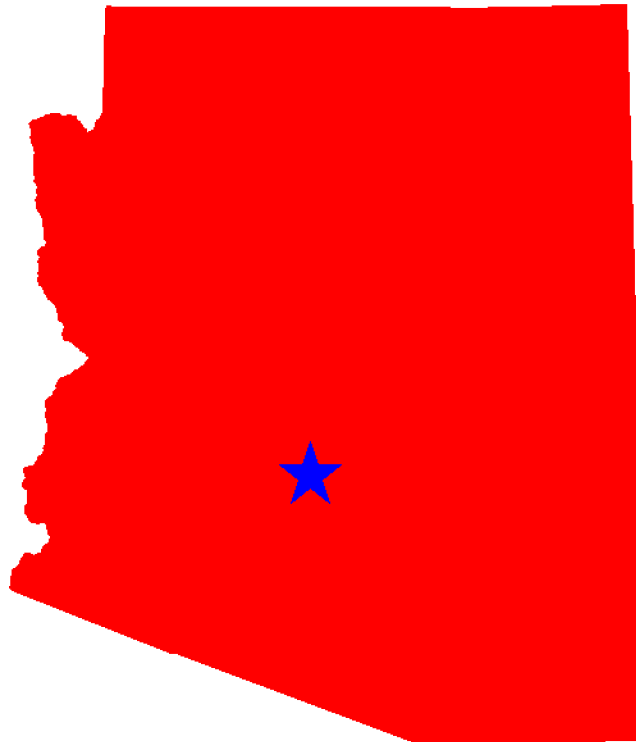




Traffic Safety Facts Arizona 2004-2008



This Report Contains Data From the Following Sources:

- Fatality Data - NCSA Fatality Analysis Reporting System (FARS): 2004-2007 Final File and 2008 Annual Report File (ARF)
- Observed Safety Belt Data - NCSA National Occupant Protection Use Survey (NOPUS) and the Arizona State Survey
- Vehicle Miles of Travel Data and Motorcycle Registrations - Federal Highway Administration (FHWA)
- Population Data - U.S. Bureau of the Census



Table of Contents

3. Traffic Safety Performance Measures
4. Fatality Rates: Arizona , U.S. and Best State
5. Alcohol-Related Fatalities: Arizona , U.S. and Best State (Old Definition)
6. Alcohol-Impaired Driving Fatalities: Arizona , U.S. and Best State (New Definition)
7. Fatalities Per 100 Million VMT: Arizona , U.S.
7. Alcohol-Impaired Driving Fatalities Per 100 Million VMT: Arizona , U.S.
8. Blood Alcohol Concentration (BAC) Reporting Rates For Drivers/Motorcycle Rider (Operators) Involved in Fatal Crashes: Arizona , U.S. and Best State
9. Front Seat Passenger Vehicle Occupants, Aged 5 and Over, by Restraint Use: Fatalities and Observed Arizona , U.S. and Best State
10. Front Seat Passenger Vehicle Occupant Fatalities, Aged 5 and Over, by Percent Restraint Use: Arizona , U.S.
10. Front Seat Passenger Vehicle Occupants Observed, Aged 5 and Over, by Percent Restraint Use: Arizona , U.S.
11. Passenger Vehicle Occupant Fatalities Aged 5 and Above by Restraint Use and Lives Saved Estimates
11. Passenger Vehicle Occupant Fatalities Aged Under 5 by Restraint Use and Lives Saved Estimates
12. Motorcyclist Fatalities by Helmet Use and Lives Saved Estimates
13. Fatalities by Person Type
14. Fatalities by Crash Type
15. Motorcyclist Fatalities by Age
15. Motorcyclist Fatalities Per 100,000 Registered Motorcycles
16. Fatalities by Person Type and Race/Hispanic Origin
17. Top 10 Counties for Fatalities
18. Top 10 Counties for Fatalities: Year to Year Percent Change
19. Top 10 Counties for Fatality Rates
20. Motor Vehicle Crash Fatality Maps:
Total Fatalities, Alcohol-Impaired Driving Fatalities, Single Vehicle Crash Fatalities
21. Motor Vehicle Crash Fatality Maps:
Large Truck Crash Fatalities, Speeding Involved Fatalities, Roadway Departure Fatalities
22. Motor Vehicle Crash Fatality Maps:
Intersection Fatalities, Passenger Car Occupants, Light Truck and Van Occupants
23. Motor Vehicle Crash Fatality Maps:
Motorcyclist Fatalities, Pedestrian Fatalities, Pedestrian Fatalities



Traffic Safety Performance (Core Outcome) Measures* For Arizona

Core Outcome Measures		Year				
		2004	2005	2006	2007	2008
Traffic Fatalities	Total	1,151	1,179	1,293	1,071	937
	Rural	594	536	650	516	473
	Urban	546	643	641	555	464
	Unknown	11	0	2	0	0
Fatalities Per 100 Million Vehicle Miles Driven	Total	2.01	1.97	2.07	1.70	1.52
	Rural	3.42	3.06	3.27	2.63	2.59
	Urban	1.37	1.52	1.51	1.28	1.07
Passenger Vehicle Occupant Fatalities (All Seat Positions)	Total	799	739	868	699	583
	Restrained	276	254	277	238	196
	Unrestrained	424	406	469	379	320
	Unknown	99	79	122	82	67
Alcohol-Impaired Driving Fatalities (BAC=.08+)**		334	375	399	337	266
Speeding-Related Fatalities		408	519	584	452	373
Motorcyclist Fatalities	Total	119	138	142	135	141
	Helmeted	35	58	45	54	64
	Unhelmeted	76	74	91	71	64
	Unknown	8	6	6	10	13
Drivers Involved in Fatal Crashes	Total	1,506	1,578	1,720	1,430	1,236
	Aged Under 15	7	2	3	3	1
	Aged 15-20	206	210	222	177	148
	Aged Under 21	213	212	225	180	149
	Aged 21 and Over	1,213	1,290	1,412	1,205	1,036
	Unknown Age	80	76	83	45	51
Pedestrian Fatalities		130	158	167	154	120

*These Performance Measures Were Developed By The National Highway Traffic Safety Administration (NHTSA) and the Governors Highway Safety Association (GHSA) (See Publication: DOT HS 811 025)

**Based on the BAC of All Involved Drivers and Motorcycle Riders (Operators) Only

[Back To The Table of Contents](#)



Fatality Rates: Arizona , U.S. and Best State

Year		Fatalities	Total Vehicle Miles Traveled (Millions)	Fatalities Per 100 Million Vehicle Miles Traveled	Total Population	Fatalities Per 100,000 Population
2004	Arizona	1,151	57,336	2.01	5,750,475	20.02
	US	42,836	2,964,788	1.44	292,892,127	14.63
	Best State*			0.87		7.39
2005	Arizona	1,179	59,799	1.97	5,961,239	19.78
	US	43,510	2,989,430	1.46	295,560,549	14.72
	Best State*			0.80		6.85
2006	Arizona	1,293	62,468	2.07	6,178,251	20.93
	US	42,708	3,014,371	1.42	298,362,973	14.31
	Best State*			0.78		6.32
2007	Arizona	1,071	62,963	1.70	6,353,421	16.86
	US	41,259	3,032,399	1.36	301,290,332	13.69
	Best State*			0.79		6.55
2008	Arizona	937	61,628	1.52	6,500,180	14.41
	US	37,261	2,973,509	1.25	304,059,724	12.25
	Best State*			0.67		5.59

*State (or States) With Lowest Rates: Lowest VMT and Population Rates Could Be in Different States

[Back To The Table of Contents](#)



Fatalities By The Highest Blood Alcohol Concentration (BAC) in the Crash**:
 Arizona , U.S. and Best State
 (Old Definition)

Year		Total Fatalities in all Crashes	Highest BAC level in the Crash				
			BAC = .01+		BAC = .08+		Per 100 Million VMT
			Number	Percent	Number	Percent	
2004	Arizona	1,151	446	39	385	33	0.67
	US	42,836	16,919	39	14,593	34	0.49
	Best State*			25		21	0.27
2005	Arizona	1,179	508	43	446	38	0.75
	US	43,510	17,590	40	15,102	35	0.51
	Best State*			14		12	0.14
2006	Arizona	1,293	578	45	480	37	0.77
	US	42,708	17,738	42	15,144	35	0.50
	Best State*			24		20	0.22
2007	Arizona	1,071	466	44	403	38	0.64
	US	41,259	17,158	42	14,603	35	0.48
	Best State*			24		21	0.23
2008	Arizona	937	393	42	328	35	0.53
	US	37,261	15,438	41	13,294	36	0.45
	Best State*			21		16	0.16

*State (or States) With Lowest Percents: Lowest Percents Could Be in Different States

**Based on the BAC of All Involved Drivers, Motorcycle Riders (Operators), Pedalcyclists and Pedestrians

[Back To The Table of Contents](#)



Alcohol-Impaired Driving Fatalities**:
Arizona , U.S. and Best State
(New Definition)

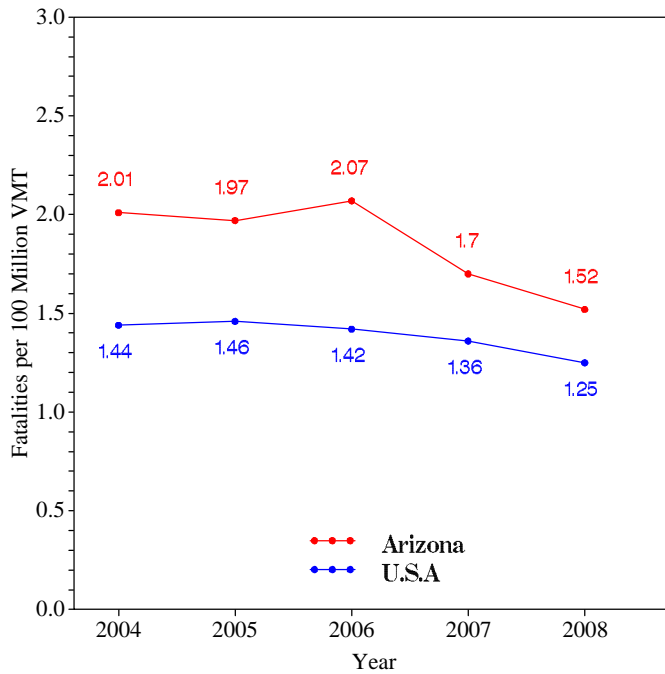
Year		Total Fatalities in all Crashes	Alcohol-Impaired Driving Fatalities (BAC = .08+)		
			Number	Percent	Per 100 Million VMT
2004	Arizona	1,151	334	29	0.58
	US	42,836	13,099	31	0.44
	Best State*			20	0.25
2005	Arizona	1,179	375	32	0.63
	US	43,510	13,582	31	0.45
	Best State*			12	0.13
2006	Arizona	1,293	399	31	0.64
	US	42,708	13,491	32	0.45
	Best State*			18	0.20
2007	Arizona	1,071	337	31	0.54
	US	41,259	13,041	32	0.43
	Best State*			19	0.21
2008	Arizona	937	266	28	0.43
	US	37,261	11,773	32	0.40
	Best State*			16	0.16

*State (or States) With Lowest Percents: Lowest Percents Could Be in Different States
**Based on the BAC of All Involved Drivers and Motorcycle Riders (Operators) Only

[Back To The Table of Contents](#)

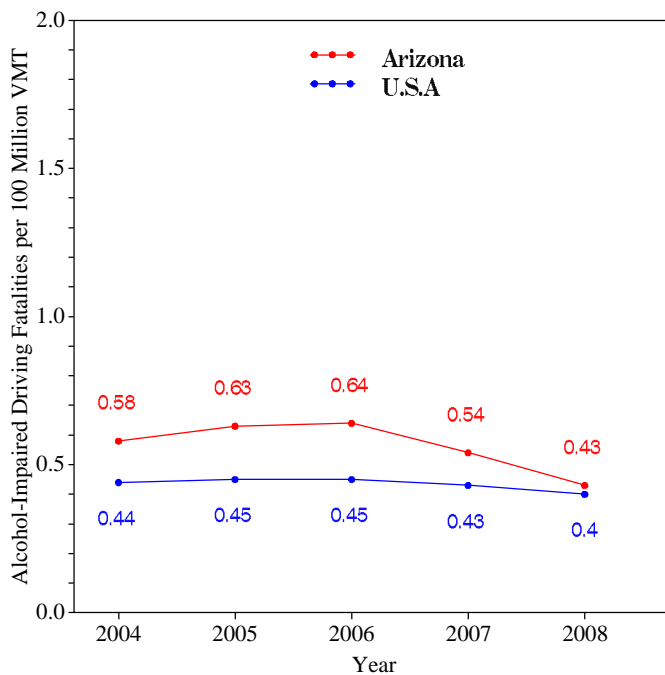


Fatalities per 100 Million VMT



[Back To The Table of Contents](#)

Alcohol-Impaired Driving Fatalities per 100 Million VMT



[Back To The Table of Contents](#)



**Blood Alcohol Concentration (BAC) Reporting Rates
For Drivers/Motorcycle Riders (Operators)
Involved in Fatal Crashes:
Arizona , U.S. and Best State**

Year		Surviving Drivers/Motorcycle Riders			Killed Drivers/Motorcycle Riders			Total Drivers/Motorcycle Riders		
		Total	With Blood Alcohol Concentration (BAC) Results Reported to FARS		Total	With Blood Alcohol Concentration (BAC) Results Reported to FARS		Total	With Blood Alcohol Concentration (BAC) Results Reported to FARS	
			Number	Percent		Number	Percent		Number	Percent
2004	Arizona	897	57	6	609	299	49	1,506	356	24
	US	31,524	8,215	26	26,871	18,275	68	58,395	26,490	45
	Best State*			80			97			82
2005	Arizona	928	52	6	650	321	49	1,578	373	24
	US	31,729	7,415	23	27,491	18,773	68	59,220	26,188	44
	Best State*			77			98			84
2006	Arizona	1,018	252	25	702	491	70	1,720	743	43
	US	30,498	7,482	25	27,348	18,911	69	57,846	26,393	46
	Best State*			81			99			85
2007	Arizona	851	246	29	579	457	79	1,430	703	49
	US	29,449	7,631	26	26,570	19,434	73	56,019	27,065	48
	Best State*			82			100			84
2008	Arizona	717	190	26	519	332	64	1,236	522	42
	US	26,011	6,677	26	24,175	17,045	71	50,186	23,722	47
	Best State*			80			95			84

*State (or States) With Highest Percents: Highest Percents Could Be in Different States

[Back To The Table of Contents](#)



Daytime Front Seat (Outboard Only) Passenger Vehicle Occupants, Aged 5 and Over, by Restraint Use: Fatalities and Observed Arizona , U.S. and Best State

Table with 4 columns: Year, State, Fatalities - Restrained** (Percent), Observed - Restrained*** (Percent). Rows include years 2004-2008 and states Arizona, US, and Best State*.

*State With Highest Percent. Fatal Crash and Observed Percents Can Be Different States

**Percent Based Only Where Restraint Use Was Known

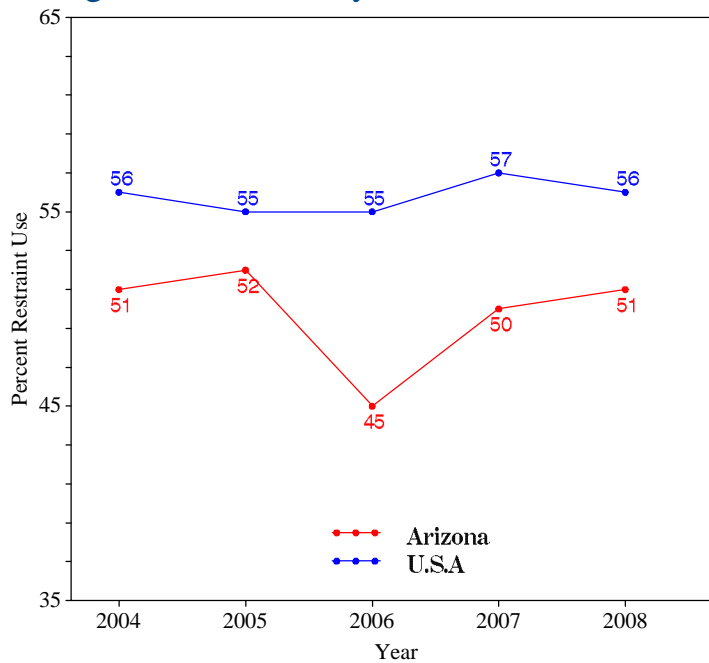
***USA Data: National Occupant Protection Use Survey. Arizona Data: State Survey

Note: The Purpose of this Table is to Compare (as closely as possible) the Use of Restraint Systems by Fatally Injured Occupants with Occupants in all Driving Situations

Back To The Table of Contents



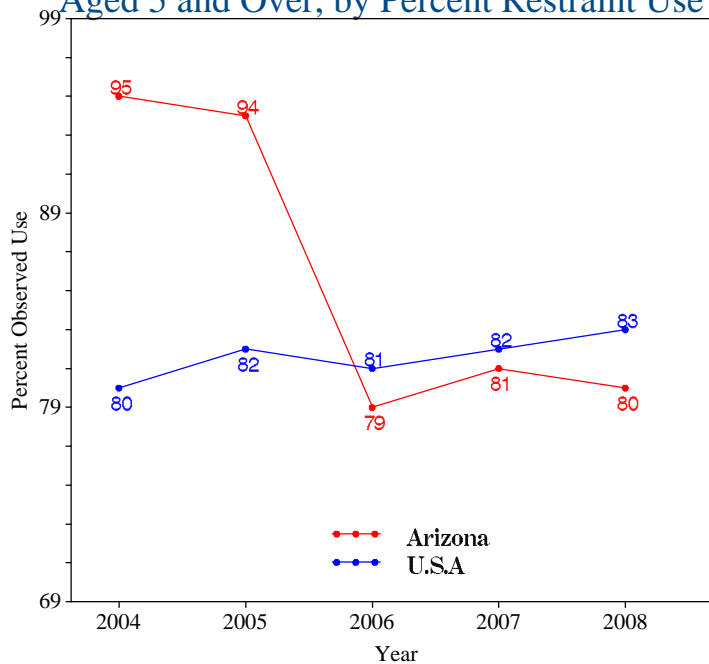
Daytime Front Seat (Outboard Only) Passenger Vehicle Occupant Fatalities, Aged 5 and Over, by Percent Restraint Use*



*Percent Based Only Where Restraint Use Was Known

[Back To The Table of Contents](#)

Daytime Front Seat (Outboard Only) Passenger Vehicle Occupants Observed, Aged 5 and Over, by Percent Restraint Use*



*USA Data: National Occupant Protection Use Survey. Arizona Data: State Survey

[Back To The Table of Contents](#)



Passenger Vehicle Occupant Fatalities Age 5 and Above by Restraint Use and Lives Saved Estimates

Year	Fatalities Age 5 and Above					Lives Saved Estimates**	
	Total	Restrained	Unrestrained	Unknown Restraint Use	Percent Known Restrained*	Lives Saved at Current Belt Use	Additional Lives Savable at 100% Belt Usage
2004	775	269	408	98	40	376	47
2005	731	250	403	78	38	346	54
2006	845	268	465	112	37	366	175
2007	681	226	375	80	38	298	135
2008	575	193	318	64	38	260	113

*Percent Based Only Where Restraint Use Was Known

**Lives Saved Estimates (Sum of columns may not equal other published numbers due to rounding)

[Back To The Table of Contents](#)

Passenger Vehicle Occupant Fatalities Age 4 and Under by Restraint Use and Lives Saved Estimates

Year	Fatalities Age 4 and Under					Lives Saved Estimates**
	Total	Restrained	Unrestrained	Unknown Restraint Use	Percent Known Restrained*	Lives Saved at Current Seat Belt and Child Safety Seat Usage
2004	10	5	5	0	50	6
2005	6	4	2	0	67	5
2006	16	9	4	3	69	13
2007	15	11	3	1	79	20
2008	5	3	2	0	60	5

*Percent Based Only Where Restraint Use Was Known

**Lives Saved Estimates

[Back To The Table of Contents](#)



Motorcyclist Fatalities by Helmet Use and Lives Saved Estimates

Year	Fatalities					Lives Saved Estimates**	
	Total	Helmeted	Unhelmeted	Unknown Helmet Use	Percent Known Helmeted*	Lives Saved at Current Helmet Use	Additional Lives Savable at 100% Helmet Usage
2004	119	35	76	8	32	22	31
2005	138	58	74	6	44	36	29
2006	142	45	91	6	33	29	35
2007	135	54	71	10	43	35	29
2008	141	64	64	13	50	42	26

*Percent Based Only Where Helmet Use Was Known

**Lives Saved Estimates (Sum of columns may not equal other published numbers due to rounding)

[Back To The Table of Contents](#)



Fatalities by Person Type

Person Type		2004		2005		2006		2007		2008	
		#	%*	#	%*	#	%*	#	%*	#	%*
Occupants	Passenger Car	396	34	353	30	425	33	357	33	292	31
	Light Truck - Pickup	176	15	175	15	212	16	167	16	129	14
	Light Truck - Utility	153	13	139	12	171	13	140	13	128	14
	Light Truck - Van	71	6	71	6	57	4	35	3	34	4
	Light Truck - Other	3	0	1	0	3	0	0	0	0	0
	Large Truck	17	1	15	1	21	2	20	2	19	2
	Bus	2	0	0	0	0	0	0	0	0	0
	Other/Unknown Occupants	53	5	88	7	62	5	34	3	49	5
	Total Occupants	871	76	842	71	951	74	753	70	651	69
Motorcyclists	Total Motorcyclists	119	10	138	12	142	11	135	13	141	15
Nonoccupants	Pedestrian	130	11	158	13	167	13	154	14	120	13
	Bicyclist and Other Cyclist	27	2	35	3	29	2	21	2	19	2
	Other/Unknown Nonoccupants	4	0	6	1	4	0	8	1	6	1
		Total Nonoccupants	161	14	199	17	200	15	183	17	145
Total	Total	1,151	100	1,179	100	1,293	100	1,071	100	937	100

*Sum of Percents May Not = 100 Due to Individual Cell Rounding

[Back To The Table of Contents](#)



Fatalities by Crash Type

Crash Type	2004	2005	2006	2007	2008
Total Fatalities (All Crashes)*	1,151	1,179	1,293	1,071	937
- (1) Single Vehicle	662	661	701	615	560
- (2) Involving a Large Truck	106	118	136	98	97
- (3) Involving Speeding	408	519	584	452	373
- (4) Involving a Rollover	462	417	495	413	353
- (5) Involving a Roadway Departure	562	526	535	506	415
- (6) Involving an Intersection (or Intersection Related)	236	268	318	269	230

(1) Crash Involved Only One Coded Vehicle

(2) Crash Involved at Least One Large Truck

(3) Crash Involved at Least One Vehicle Speeding

(4) Crash Involved at Least One Vehicle That Rolled Over

(5) Crash Involved at Least One Vehicle That Departed the Roadway (FHWA Definition)

(6) Crash Occured Within an Intersection or Within the Approach to an Intersection

*A Fatality Can Be in More Than One Category. Therefore Sum of the Individual Cells Will Not Equal the Total Due to Double Counting

[Back To The Table of Contents](#)



Motorcyclist Fatalities by Age

Year	Age						Total
	<20	20-29	30-39	40-49	50-59	>59	
2004	14	23	20	31	26	5	119
2005	13	34	26	29	24	12	138
2006	13	34	23	28	33	11	142
2007	12	22	28	35	23	15	135
2008	3	36	20	30	27	25	141

[Back To The Table of Contents](#)

Motorcyclist Fatalities Per 100,000 Registered Motorcycles

Year	Motorcyclist Fatalities	Total Motorcycle Registrations*	Motorcyclist Fatalities Per 100,000 Motorcycle Registrations
2004	119	209,048	56.92
2005	138	98,703	139.8
2006	142	114,443	124.1
2007	135	125,219	107.8
2008	141	134,434	104.9

*Data Source: FHWA

[Back To The Table of Contents](#)



Fatalities by Person Type and Race/Hispanic Origin

Person Type by Race/Hispanic Origin		2004	2005	2006	2007
Occupants (All Vehicle Types)	Hispanic	266	311	347	266
	White Non-Hispanic	440	374	538	463
	Black, Non-Hispanic	26	28	26	28
	American Indian, Non-Hispanic/Unknown	82	108	107	107
	Asian, Non-Hispanic/Unknown	4	5	4	2
	Pacific Islander, Non-Hispanic/Unknown	0	1	0	0
	Multiple Races, Non-Hispanic/Unknown	0	1	0	0
	All Other Non-Hispanic or Race	13	143	61	18
	Unknown Race and Unknown Hispanic	159	9	10	4
	Total	990	980	1,093	888
Non-Occupants (Pedestrians, Pedalcyclists and Other/Unknown NonOccupants)					
	Hispanic	47	60	64	54
	White Non-Hispanic	57	65	80	87
	Black, Non-Hispanic	0	6	5	5
	American Indian, Non-Hispanic/Unknown	19	29	34	33
	Asian, Non-Hispanic/Unknown	0	1	0	2
	Pacific Islander, Non-Hispanic/Unknown	0	0	0	0
	Multiple Races, Non-Hispanic/Unknown	0	0	0	0
	All Other Non-Hispanic or Race	0	37	15	0
	Unknown Race and Unknown Hispanic	38	1	2	2
Total	161	199	200	183	
Total	1,151	1,179	1,293	1,071	

2008 Race/Hispanic Origin Data is Not Yet Complete

[Back To The Table of Contents](#)



5 Year Trend For The Top 10 Counties of 2008 - Fatalities

Counties by 2008 Ranking		Fatalities					Percent of Total				
		2004	2005	2006	2007	2008	2004	2005	2006	2007	2008
1	Maricopa County	458	524	564	461	368	40	44	44	43	39
2	Pima County	148	137	154	129	137	13	12	12	12	15
3	Pinal County	94	84	131	86	81	8	7	10	8	9
4	Mohave County	53	61	61	52	57	5	5	5	5	6
5	Coconino County	58	62	82	56	51	5	5	6	5	5
6	Apache County	54	32	33	50	45	5	3	3	5	5
7	Yavapai County	79	73	72	59	41	7	6	6	6	4
8	Navajo County	51	45	41	56	36	4	4	3	5	4
9	Cochise County	53	47	35	21	33	5	4	3	2	4
10	Yuma County	27	37	37	31	26	2	3	3	3	3
Sub Total 1.*	Top Ten Counties	1,076	1,105	1,210	1,009	875	94	94	94	94	93
Sub Total 2.**	All Other Counties	74	73	83	62	62	6	6	6	6	7
Total	All Counties	1,150	1,178	1,293	1,071	937	100	100	100	100	100

*This Sub Total is the Total for the Top Ten Counties

**This Sub Total is the Total for all Counties Outside the Top Ten

[Back To The Table of Contents](#)



5 Year Trend For The Top 10 Counties of 2008 - Fatalities Year to Year Percent Change

Counties by 2008 Ranking		Fatalities					Percent Change From Previous Year			
		2004	2005	2006	2007	2008	2005	2006	2007	2008
1	Maricopa County	458	524	564	461	368	14	8	-18	-20
2	Pima County	148	137	154	129	137	-7	12	-16	6
3	Pinal County	94	84	131	86	81	-11	56	-34	-6
4	Mohave County	53	61	61	52	57	15	0	-15	10
5	Coconino County	58	62	82	56	51	7	32	-32	-9
6	Apache County	54	32	33	50	45	-41	3	52	-10
7	Yavapai County	79	73	72	59	41	-8	-1	-18	-31
8	Navajo County	51	45	41	56	36	-12	-9	37	-36
9	Cochise County	53	47	35	21	33	-11	-26	-40	57
10	Yuma County	27	37	37	31	26	37	0	-16	-16
Sub Total 1.*		1,076	1,105	1,210	1,009	875	3	10	-17	-13
Sub Total 2.**		74	73	83	62	62	-1	14	-25	0
Total		1,150	1,178	1,293	1,071	937	2	10	-17	-13

*This Sub Total is the Total for the Top Ten Counties

**This Sub Total is the Total for all Counties Outside the Top Ten

[Back To The Table of Contents](#)



5 Year Trend For The Top 10 Counties of 2008 - Fatality Rates

Median Rate for all U.S. Counties: 19.59

Counties by 2008 Ranking		Fatalities Per 100,000 Population				
		2004	2005	2006	2007	2008
1	La Paz County	142.64	175.83	135.28	144.34	99.57
2	Apache County	79.48	46.88	47.61	71.77	64.10
3	Gila County	49.18	35.37	42.77	46.21	42.17
4	Coconino County	47.06	49.74	65.10	43.97	39.67
5	Greenlee County	0.00	27.43	107.41	12.92	37.49
6	Navajo County	48.56	42.07	37.64	50.41	31.93
7	Mohave County	29.73	32.82	31.68	26.55	29.04
8	Cochise County	43.05	37.45	27.62	16.42	25.58
9	Pinal County	42.63	35.42	48.75	28.58	24.75
10	Graham County	27.75	24.53	29.97	22.87	21.95
	Sub Rate 1.* <i>Top Ten Counties</i>	45.44	40.60	45.13	36.69	32.94
	Sub Rate 2.** <i>All Other Counties</i>	13.86	14.74	15.73	12.40	10.72
	Total Rate <i>All Counties</i>	20.00	19.76	20.93	16.86	14.41

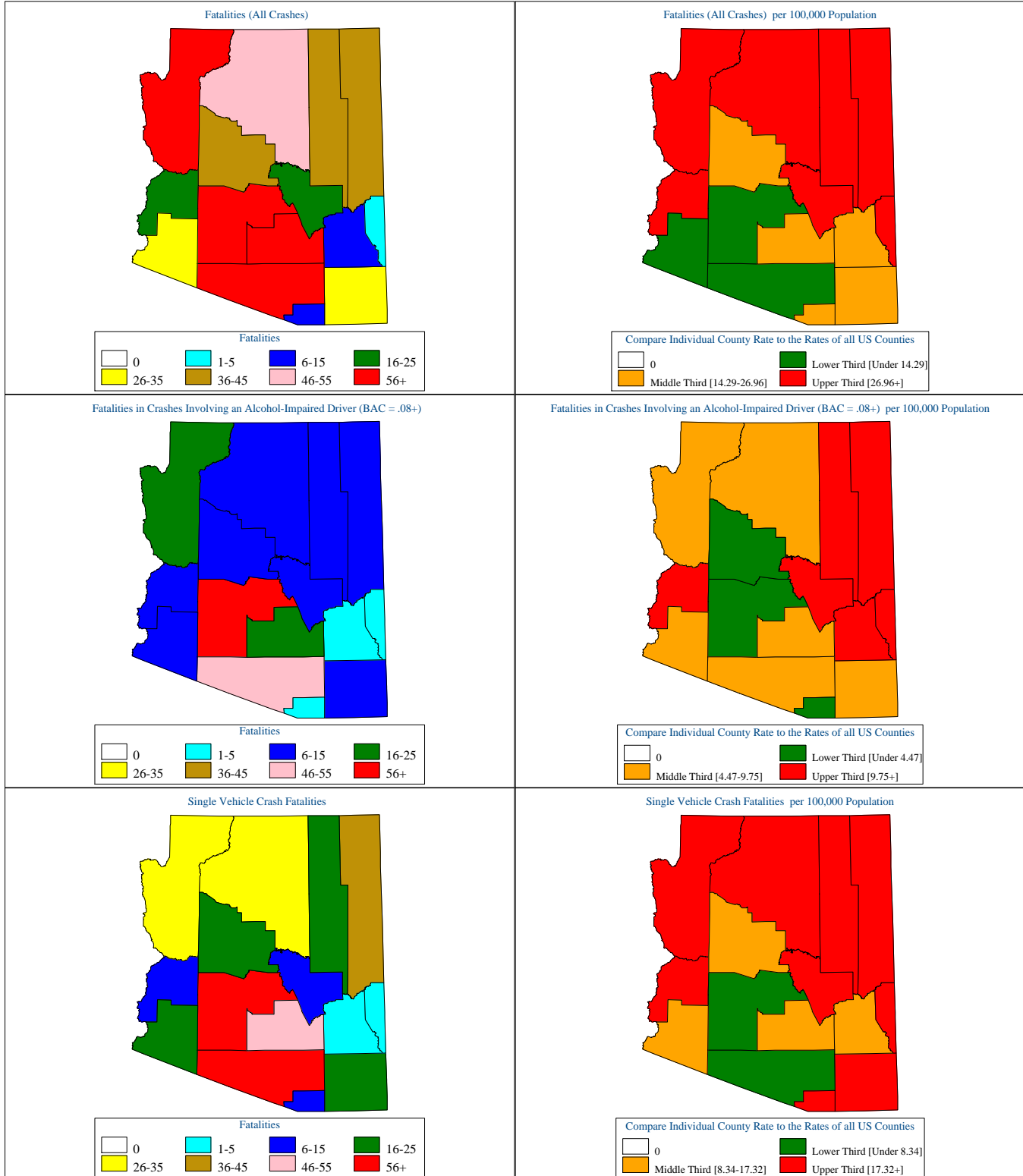
*This Sub Rate is the Rate for the Top Ten Counties

**This Sub Rate is the Rate for all Counties Outside the Top Ten

[Back To The Table of Contents](#)



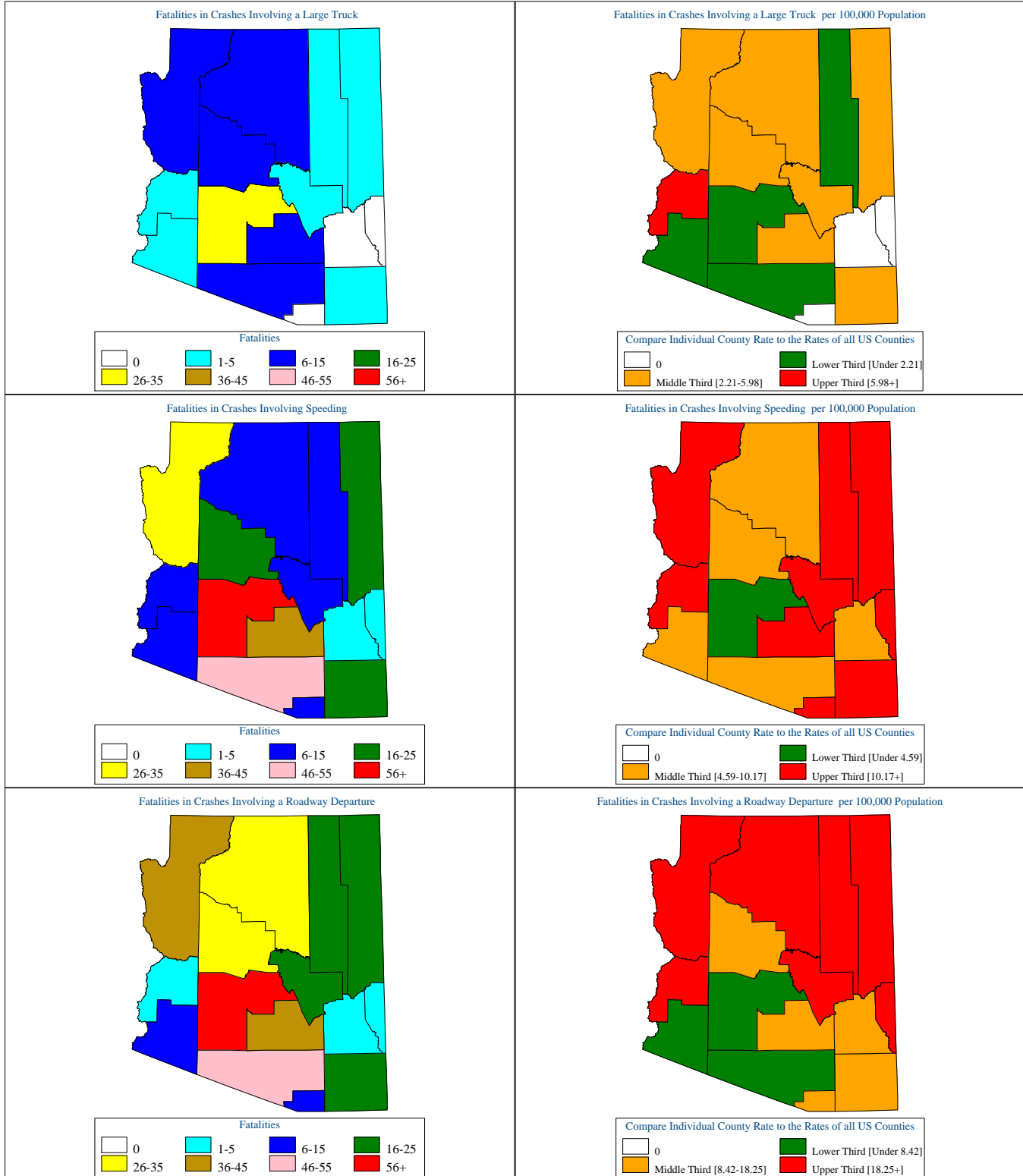
Arizona Motor Vehicle Crash Fatality Maps for 2008



[Back To The Table of Contents](#)



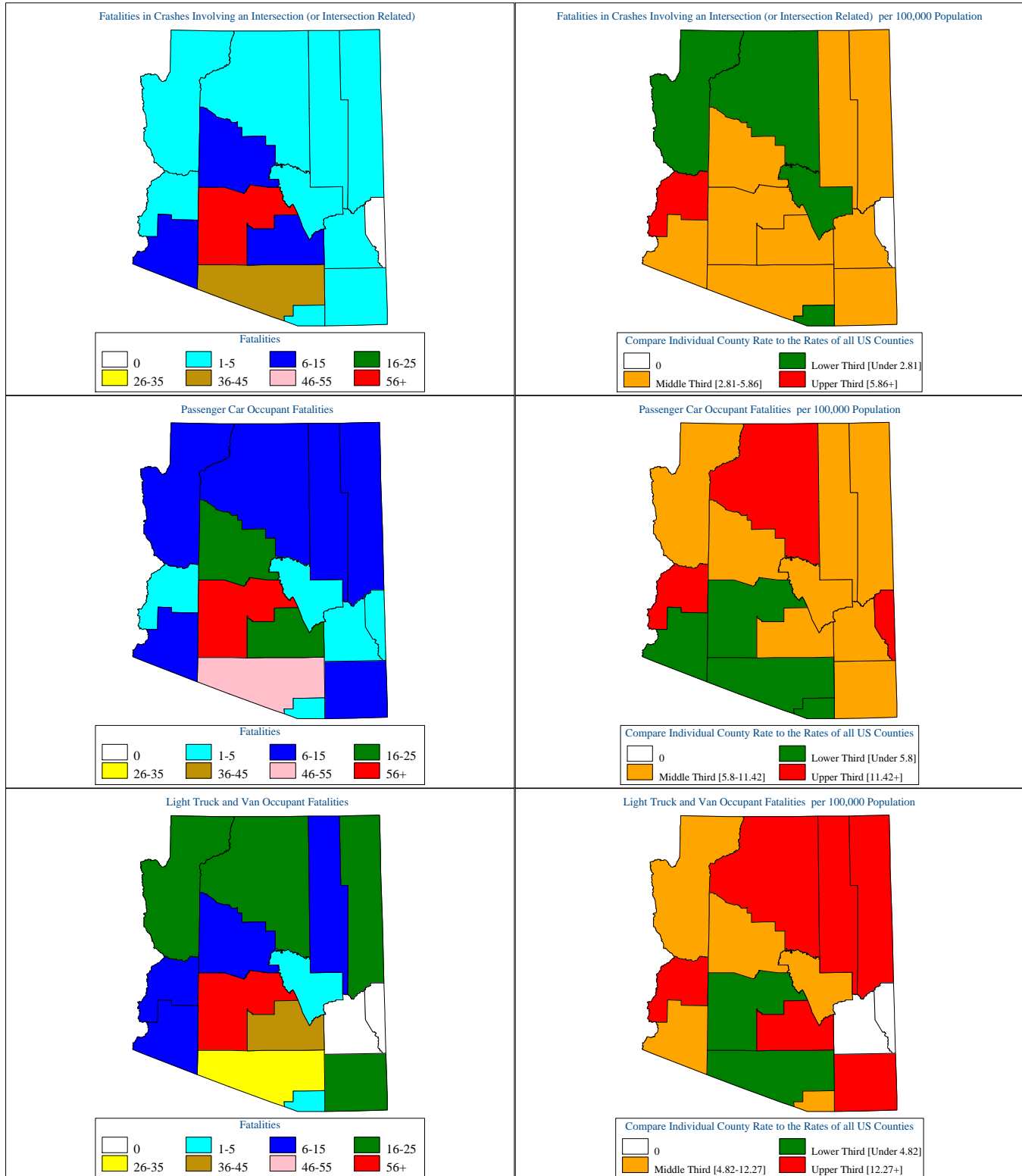
Arizona Motor Vehicle Crash Fatality Maps for 2008



[Back To The Table of Contents](#)



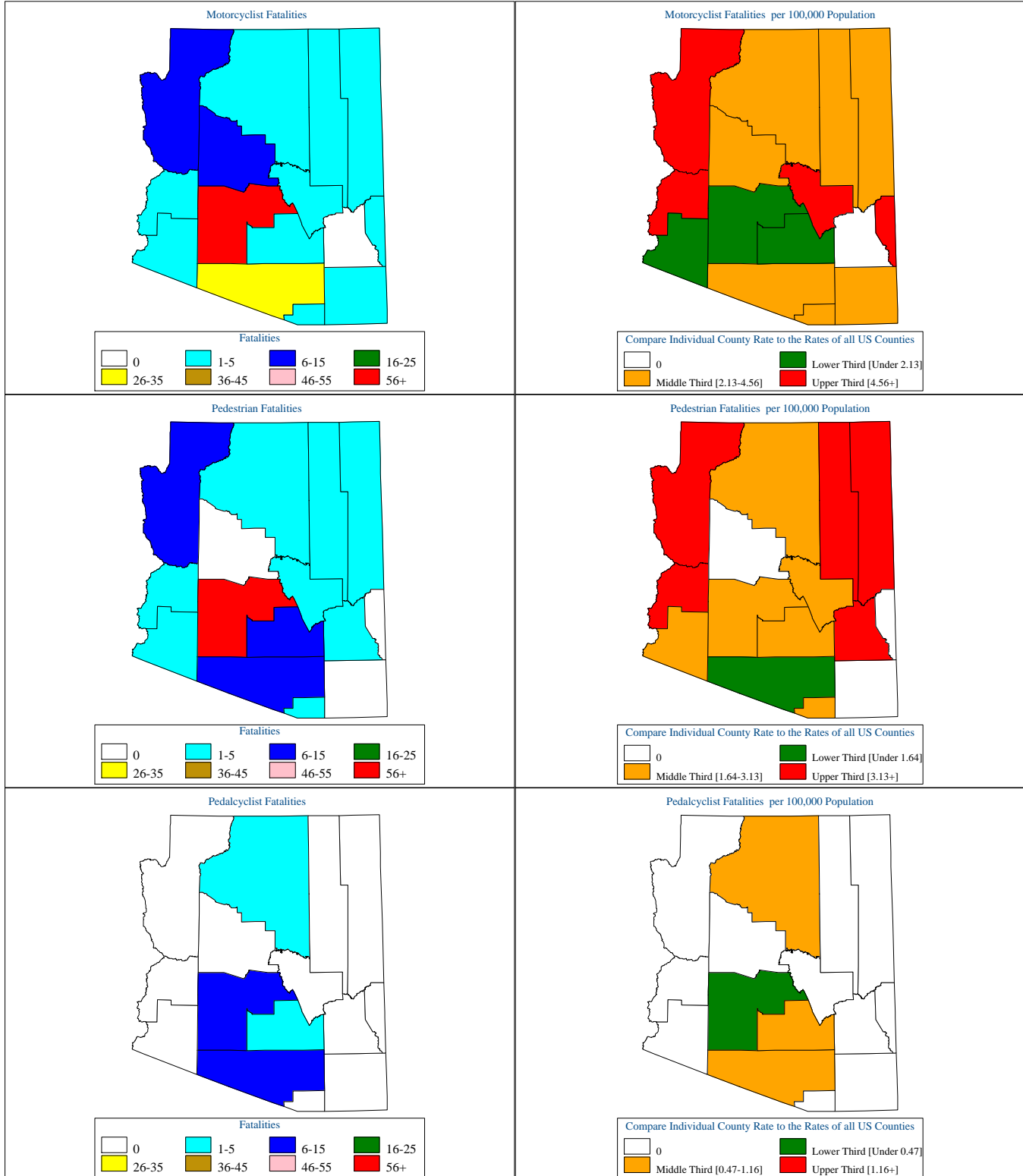
Arizona Motor Vehicle Crash Fatality Maps for 2008



[Back To The Table of Contents](#)



Arizona Motor Vehicle Crash Fatality Maps for 2008



[Back To The Table of Contents](#)